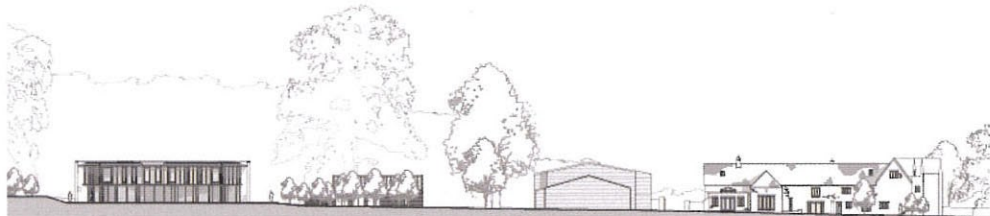


# IN PROGRESS



## CASA ARCHITECTS FROM PASSIVHAUS



CaSA Architects has obtained planning consent for a NPPF 55 Passivhaus dwelling located in Somerset parkland adjacent to a listed farmhouse. Sited between two large oak trees, the Y-shaped 'open-hand' plan is intended to 'reach out, touch and welcome' the wider landscape, as well as visually reduce the building's mass. Three wings define arrival, garden and parkland zones.

A single timber-clad opening signals the entrance within a monumental stone facade. The double-height masonry walls extend toward the parkland and beyond the roof edge as if to shelter the house's cedar-clad body.

The open-timber side of the house, which contains the main living spaces, is designed to optimise passive solar gain and views. Excessive solar gain is controlled by large roof overhangs and vertical timber fins. Windows to the public side are more modest and employ vertical proportions. Construction is due to begin on site in the autumn.

